



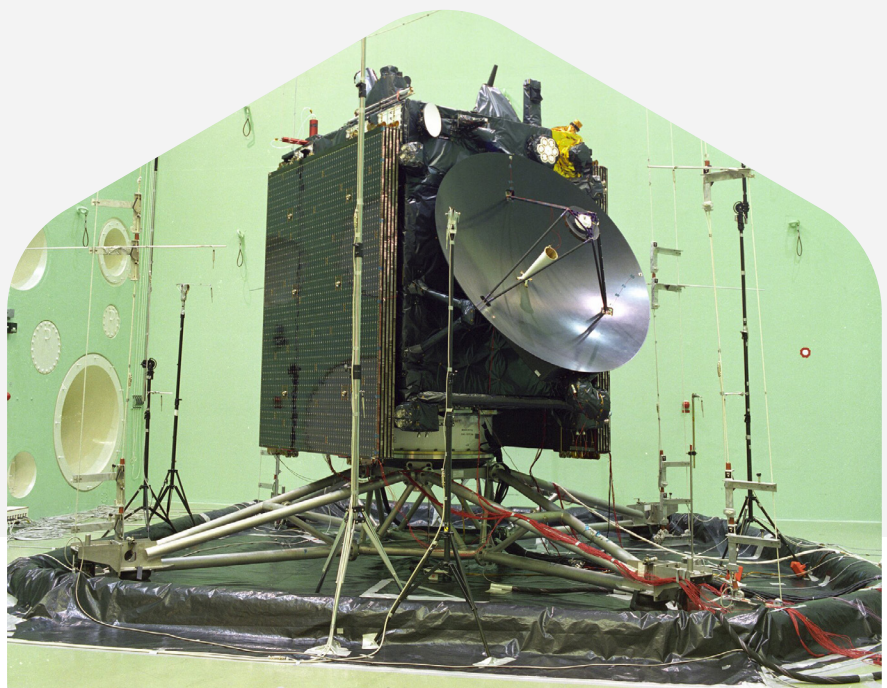
# Iris SCADA HMI

# Ahead of time

Experience the **Iris SCADA HMI** software! This unique internal event driven engine is way ahead of its time and enables solutions that were not possible before.

Iris was designed by experienced engineers in industrial automation. The open, web-based and cyber secure architecture guarantees flexibility, easy integration, easy configuration and easy expansion, securing your investment.

Process visualization, alarming, trending, data logging and interfacing are standard functionalities, but there is more to offer. The open system database enables advanced reporting. Functionalities such as multi clients, application generation, online engineering, operator definable trending, automatic graphic scaling are just a few options to experience.







## Architecture

The center of Iris is an event-driven engine called Iris Server that 'knows' which module needs to send and receive data. The Iris Server ensures that the data is transferred between the different modules. Each module is then responsible for performing its tasks. This modular approach is the basis for implementing a client-server architecture. Your Iris application is saved in an open file format. It allows you to read an application using a standard editor and saves you a lot of effort and time in learning the details of the application.

## Cyber security

All modern cyber security measures are implemented and available in Iris. Data paths can be encrypted from the PLC level to the Iris Clients. Authentication features such as single sign-on and Active Directory are supported. All this helps you to make your system compliant with the IEC 62443 standard.

## Web based user interface

Based on the latest web technology, your Iris graphical interface will quickly run and respond to page jumps and load data in no time in just your device's web browser. No installation required, launch the browser and log in with your login credentials and your Iris clients will run smoothly and securely on your PC, laptop, tablet and/or smartphone. Active directory and single sign-on functionality is integrated into Iris. All devices use the same application source, no conversion to web is necessary as Iris is natively web-based.

## High speed communication

Iris connects to industrial automation and information systems and devices communicating, OPC UA, Modbus TCP, Siemens S7 TCP and more. A unique solution is provided for high-speed communication that ensures all data (including alarms) is received, visualized and transmitted. This is the way to guarantee the quality of your process.

## Online changes

In many cases, operators need the flexibility to start a, temporary, trend on a specific data point in the field or need to log data from a data point for a limited time. Iris allows you to do this without the intervention of a certified Iris engineer. Change the running application online without stopping the production process, so without downtime. Even tags can be added and/or removed without interrupting your process.

## Make OO work for you

There is a huge advantage when your SCADA HMI follows the object-oriented (OO) approach, saving you a lot of time in developing and maintaining your complete application. Iris fully supports ISA-88. Objects and tag names are defined within the control module and are automatically created when the control module, equipment module, unit or process cell is copied into the application.

## Configuration editor

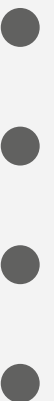
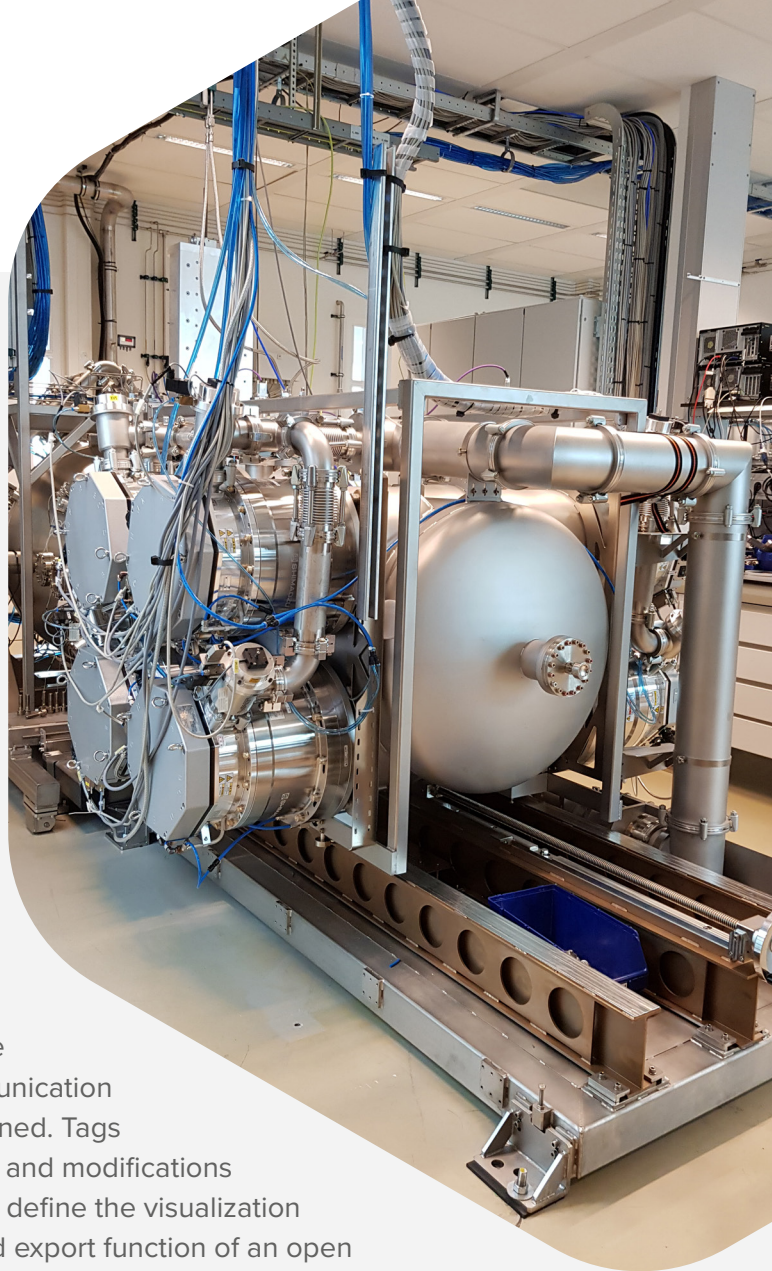
Iris' configuration editor is the starting point for your application development. Any Iris Client with elevated rights can remotely access the Iris Server Edit environment. Via a very clear overview (multiple windows to zoom in on detailed information), communication drivers, tag definitions and alarm properties are defined. Tags belonging to a certain group can be easily retrieved and modifications can be made easily. The screen editor allows you to define the visualization windows (panels) for your application. An import and export function of an open file format is supported so you can develop an application in the most efficient way. The editor can work completely independent of an application. This makes it possible to make online changes to the graphical layout of a screen.

## Alarming

Iris offers you a very powerful alarm handler. It allows single alarms and alarm groups to help the operator quickly recognize which part of the process is involved. Different colors and flashing can help to differentiate the urgency of the alarm. Alarms can be logged and printed for further analysis in multiple windows.

## Trending

The trend module in Iris shows a huge amount of 2D and 3D chart styles with zoom, scroll and rotation capabilities, multi-axis operation and print and export capabilities. There is also the possibility of vertical trending. When an operator wants to trigger a specific data point or see multiple data points in one trend, he or she can make the necessary adjustments online in the runtime application without the help of a certified engineer.



## Migration

Iris has a number of advanced migration capabilities. Text-based application source files can be easily transferred from previous Iris versions or other SCADA vendors to an Iris open application format. This automatic process saves you a lot of effort, time, risk/failure and secures your past investments.

## Iris for OEM

Raster's mission is to build long-term relationships with our customers. We invest in you to understand your needs and work with you to develop the solution that fully meets your needs. We have the capabilities to make modifications to the software, develop a specific driver, develop specific objects or any other development to help you as partner create a unique offering. Our OEM customers usually customize and brand Iris.

## Services

### *Iris Support*

Our support team will be happy to help you with your questions. Our experts answer practice-related questions related to specific usage scenarios and applications of Iris SCADA software. We will help you immediately, expertly and comprehensively.

### *Iris Training*

To get a kick-start on Iris applications, an Iris training course is available in which you will learn everything you need to develop your applications in the fastest way possible. The training is interactive and practical and is given by well experienced engineers with a large practical knowledge of various SCADA applications. Iris SCADA training can also be provided as In-Company training.

### *Iris Engineering Days*

Start-up design, development and testing of customer specific SCADA applications based on the Iris SCADA software in cooperation with you. Your benefits:

- You work with highly experienced Iris SCADA experts.
- Fast access to application development.
- Number of Engineering Days and dates can be chosen as desired.







## References

The first installation to be equipped with Iris was the salvaging of the Russian nuclear submarine, Kursk, in 2001. The high requirements in this globally known project could not be realized with ordinary SCADA software. Since then, more than 500 Iris licenses have been installed at different customers in different markets.

### A SELECTION:

<b>CUSTOMER</b>	<b>PROJECT</b>
Mammoet	Kursk Salvation & many others
A2Sea	Sea Jack
DSM	Packaging line EPT3
TNO	Vacuum Test Centre
Total	On/Off shore
FCC Madrid	Lifting Roof Madrid Stadium
Aviko	Food
Bakery	Food
Normandise	Food (Tracking & Tracing)
DuPont	Teflon
Lödige	Puzzle Parking
Schmolz & Bickenbach	Steel
Herrenknecht	Shaft control

